

# GENIE ROLLER BANNER STANDS

ROLLER BANNER STANDS



Compact and  
lightweight system

Smart satin anodised  
aluminium casing

ROLLER BANNER STANDS

3 part bungeed pole

plex

# GENIE

# STYLISH BANNER S

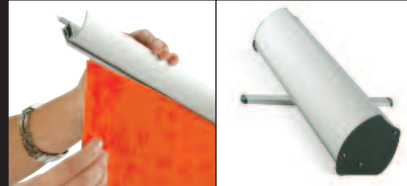
GENIE IS A **STYLISH** SINGLE SIDED ROLLER BANNER STAND PRESENTED IN A SMART **SILVER ANODISED FINISH**, FEATURING A **QUICK CHANGE GRAPHIC** FACILITY. THE VISIBLE GRAPHIC PANEL SIZE IS 2100MM HIGH X 800MM OR 1000MM WIDE.

#### FEATURES

- Single sided budget roller banner stand
- Quick and easy setup
- Gripper style top hanger
- Twist out stabilising foot
- 3 part bungeed pole
- Available in two widths; 800mm and 1000mm.
- Quick change graphic facility using hook and loop low profile velcro®
- Ability to alter graphic tension
- Comes complete with carry bag

#### ACCESSORIES

- Wide range of spotlighting available



# plex

SILVER ANODISED

# TAND



1. Sirius - Chrome  
50w mains spotlight
2. Sirius - Nickel  
50w mains spotlight
3. Polaris - Silver  
50w mains spotlight
4. Polaris - Black  
50w mains spotlight
5. Banner stand transit case
6. Twist out foot

ROLLER BANNER STANDS

COMPACT AND PORTABLE

LIGHTING OPTIONS

SET UP IN SECONDS

## SPECIFICATIONS

### GRAPHIC PANEL SIZE

Finished graphic panel size  
2315 x 800 / 1000mm  
(Includes 200mm bleed)

### Visual graphic area

2100 x 800 / 1000mm (this allows for the  
14mm of graphic hidden by the top gripper rail)

Maximum finished graphic panel thickness  
500 micron

### SYSTEM SIZES

#### Boxed size

800mm = 830 (L) x 120 (W) x 110 (D)mm

1000mm = 1050 (L) x 140 (W) x 120 (D)mm

#### Assembled size

800mm = 815 (W) x 275 (D) x 2155 (H)mm

1000mm = 1015 (W) x 275 (D) x 2155 (H)mm

#### BOXED WEIGHT

800mm = 3kg

1000mm = 3.6kg

## COMPONENT LIST

Genie unit

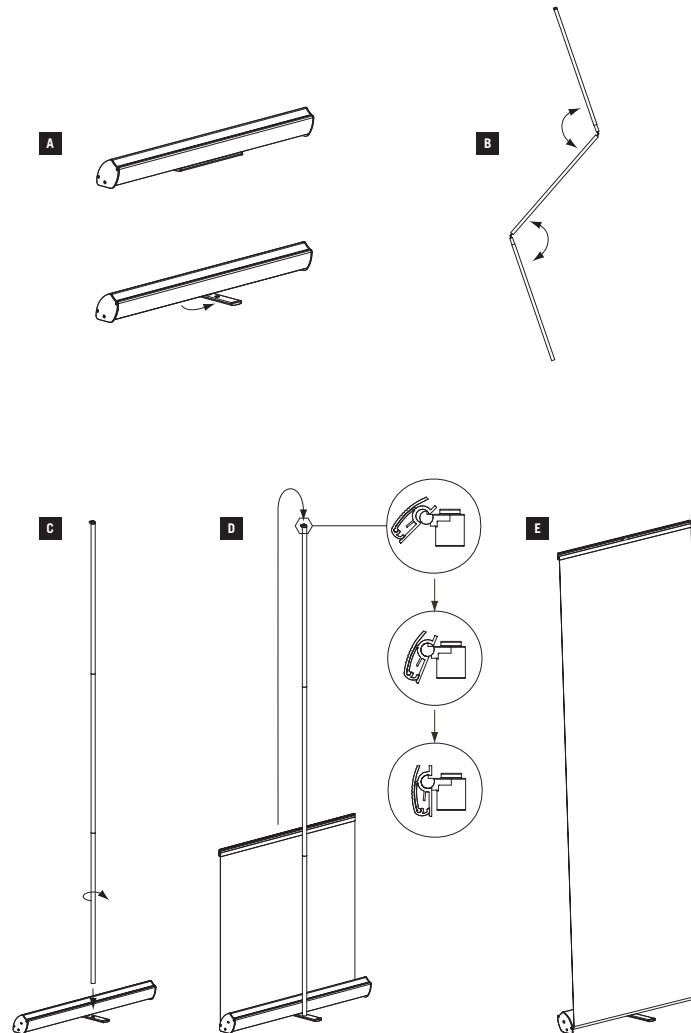
3 part bungeed pole

Graphic gripper rail

Padded carry bag

International Patent Application  
No. WO 02/057588  
No. PCT/GB02/00129 in USA  
Issue 9 - December 2009

## GENIE BANNER STAND ASSEMBLY INSTRUCTIONS

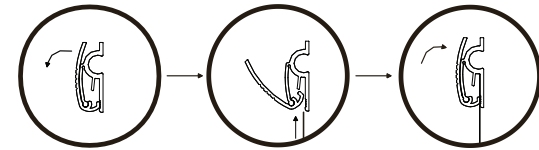


### IMPORTANT NOTE

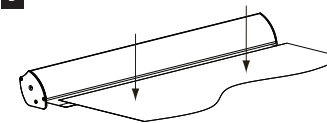
When retracting a graphic always slowly guide it into base housing, otherwise graphic damage may occur.

## GRAPHIC ATTACHMENT

**A** Insert top of graphic panel into profile as shown below.

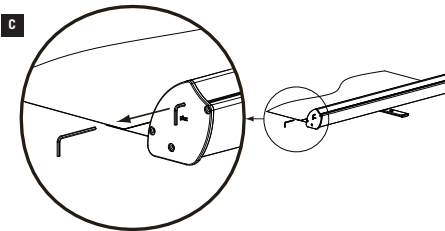


**B**



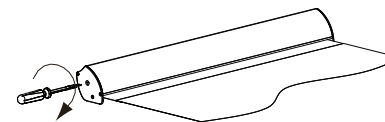
Attach hook Velcro® to front bottom edge of graphic panel. Attach graphic panel leader sheet by positioning hook Velcro® against loop Velcro®. Ensure graphic panel is aligned parallel to the leader sheet.

**C**



Holding onto graphic, remove locking pin and allow graphic to slowly retract into unit.

## ADDING OR REMOVING GRAPHIC TENSION



Insert a standard flat headed screwdriver into slot located in the end of unit and turn clockwise to add extra graphic tension

### REMOVING THE TENSION FROM A GENIE

To un-tension graphic panel, place a flat headed screwdriver into the slot and push to disengage ratchet. Hold in and turn anti-clockwise until tension in spring is released. To remove graphic panel, carefully peel it off leader sheet. The gripper rail can be removed and re-used.

### IMPORTANT NOTE

To ensure a proper bond between graphic and Velcro® strip pressure must be applied. The adhesive should be allowed to cure for 24 hours before tension is applied.