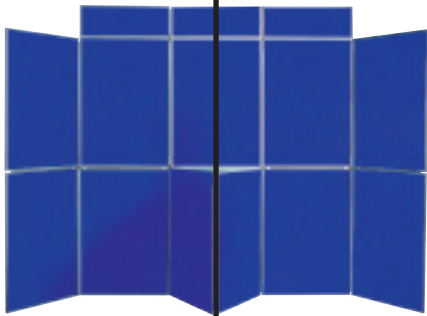


PLEX 100 FOLDING DISPLAY SYSTEMS

FOLDING DISPLAY SYSTEMS



Choice of 19
fabric colours

Wide selection of kit
configurations



Portable & lightweight

plex
DISPLAY
modular

FOLDING DISPLAY SYSTEMS

PLEX 100

LIGHTWEIGHT & PORTABLE

PLEX 100 IS **SIMPLY THE BEST** FOLDING KIT ON THE MARKET, KITS CAN BE SET UP IN SECONDS WITH **NO TOOLS REQUIRED**. THE RANGE EXTENDS THROUGH A SELECTION OF FIFTEEN DIFFERENT STYLE AND SIZE CONFIGURATIONS AND THE LOOP NYLON PANEL COVERINGS ARE ALL VELCRO® COMPATIBLE.

FEATURES

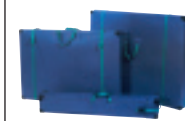
- Range of highly portable, lightweight and versatile systems
- Simply unfold and set kits up in seconds
- Tough and durable PVC frames in black or grey
- Choice of 15 kit configurations offered all manufactured from Class 1 fire rated panel boards
- Extensive selection of lighting and carry bags available
- Range of 19 loop nylon fabric colour options

ACCESSORIES

- Choice of lighting options
- Selection of carry bags and cases



Panel carry bags



Panel carry cases

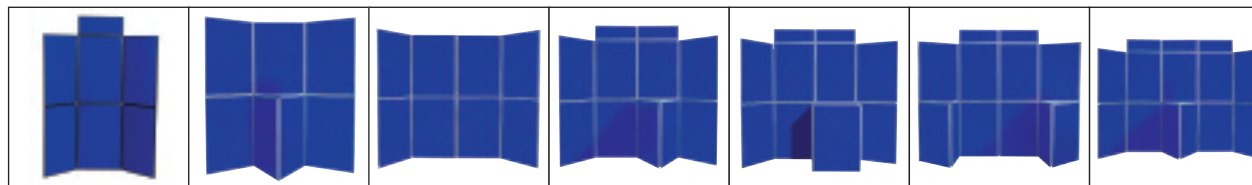


plex
DISPLAY
modular

FAST FOLD | QUICK & EASY

TABLE

900mm x 600mm panel kits



PK18
6 panel folding kit

PK19
7 panel folding kit

PK120
8 panel folding kit

PK121
9 panel folding kit

PK122
10 panel folding kit

PK123
10 panel folding kit

PK124
11 panel folding kit



Optional dry wipe panel



Loop Nylon

1. Barley
2. Sungold
3. Quince Green
4. Laurel Green
5. Emerald Green
6. Bottle Green
7. Wedgewood Blue
8. Blueberry
9. Special Blue
10. Royal Blue
11. Regal Blue
12. BA Navy
13. Burgundy
14. Alpha Red
15. Cherry Red
16. Light Grey
17. Silver Grey
18. Dove Grey
19. Black

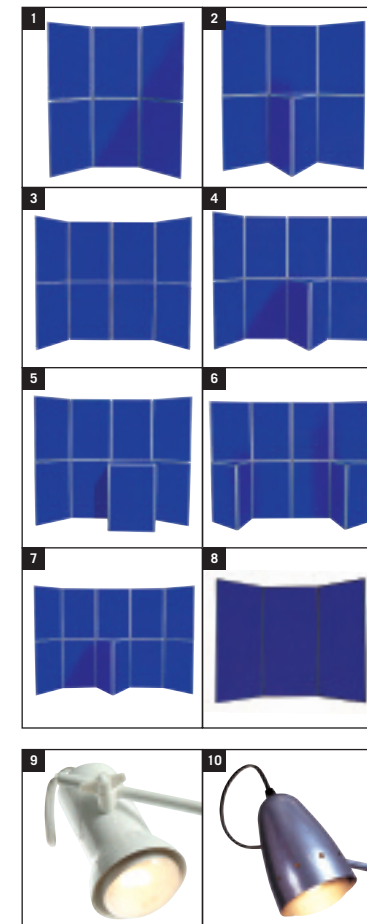
Please note : Fabric colours shown are only given as a guide. Slight colour variations may occur between batches of material

1000mm x 700mm panel kits

1. PK11
6 panel folding kit
2. PK12
7 panel folding kit
3. PK13
8 panel folding kit
4. PK14
9 panel folding kit
5. PK15
10 panel folding kit
6. PK16
10 panel folding kit
7. PK17
11 panel folding kit

1800mm x 900mm panel kits

8. PK125
3 panel jumbo folding kit



9. Helios 1
60w spot
10. Helios 2
100w spot

FOLDING DISPLAY SYSTEMS

SPECIFICATIONS

BOXED WEIGHTS

1000 x 700mm panels

PK11 (6 panel kit) = 8.90kg
 PK12 (7 panel kit inc. 1 triangular table top) = 12.70kg
 PK13 (8 panel kit) = 12.50kg
 PK14 (9 panel kit inc. 1 triangular table top) = 15.40kg
 PK15 (10 panel kit inc. 1 square table top) = 16.70kg
 PK16 (10 panel kit inc. 2 triangular table tops) = 18.80kg
 PK17 (11 panel kit inc. 1 triangular table top) = 18.00kg

900 x 600mm panels

PK18 (6 panel kit inc. 1 header) = 8.80kg
 PK19 (7 panel kit inc. 1 triangular table top) = 12.13kg
 PK120 (8 panel kit) = 11.09kg
 PK121 (9 panel kit inc. 2 headers & 1 triangular table top) = 14.70kg
 PK122 (10 panel kit inc. 2 headers & 1 square table top) = 15.80kg
 PK123 (10 panel kit inc. 2 headers & 2 triangular table tops) = 17.60kg
 PK124 (11 panel kit inc. 3 headers & 1 triangular table top) = 17.50kg

Jumbo panels = 13.50kg

PANEL SIZES

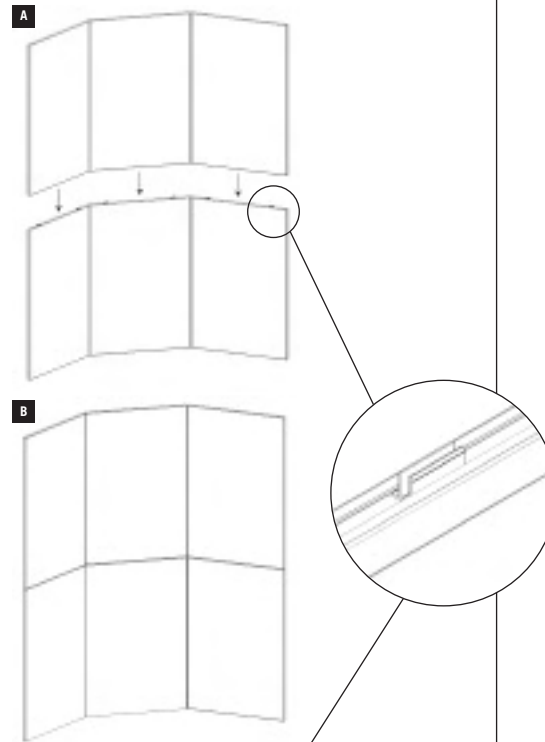
Panel thickness = 16mm

FABRIC AREA

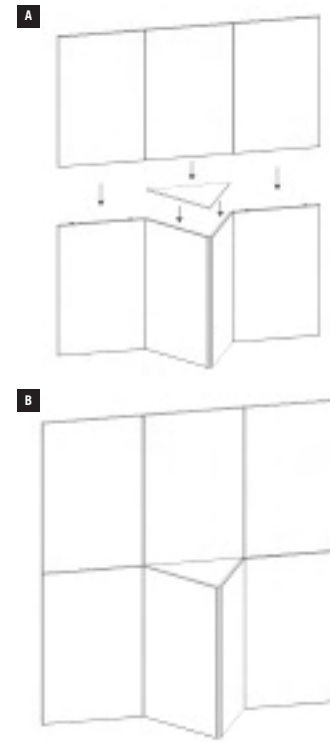
Panel length minus 26mm
 Panel width minus 26mm
 (eg, 1000 x 700mm
 = 974 x 674mm fabric area)

PLEX 100 ASSEMBLY INSTRUCTIONS

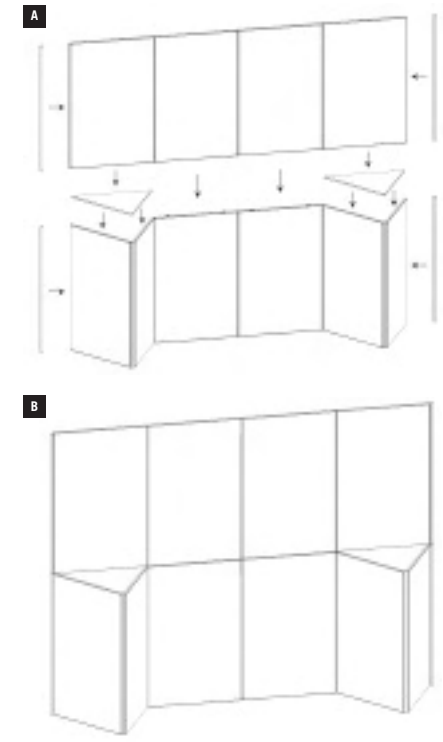
Folding kit



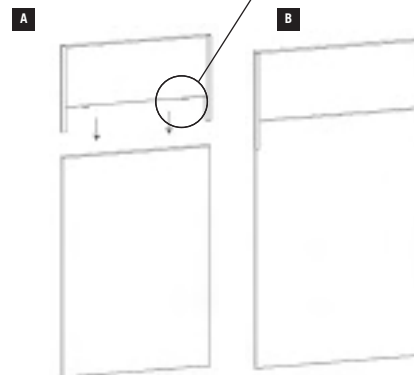
Folding kit with a table top



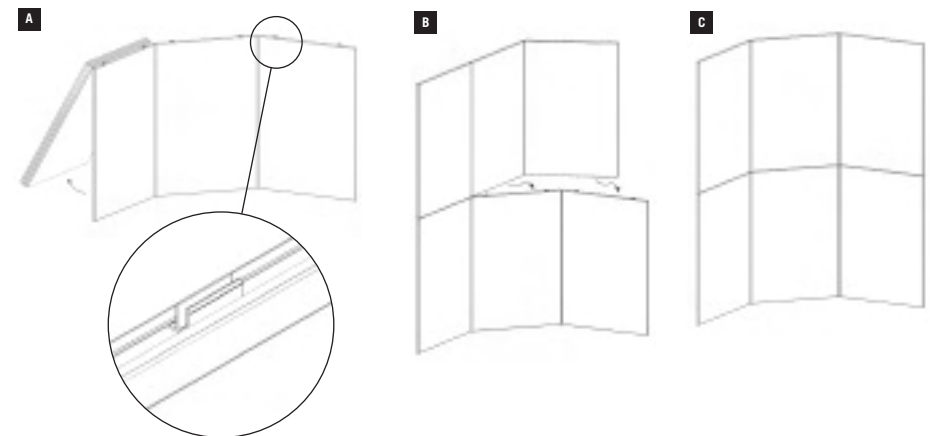
Folding kit with a table tops & poles



Attaching a header panel



Assembling an up & over hinge kit



plex
DISPLAY